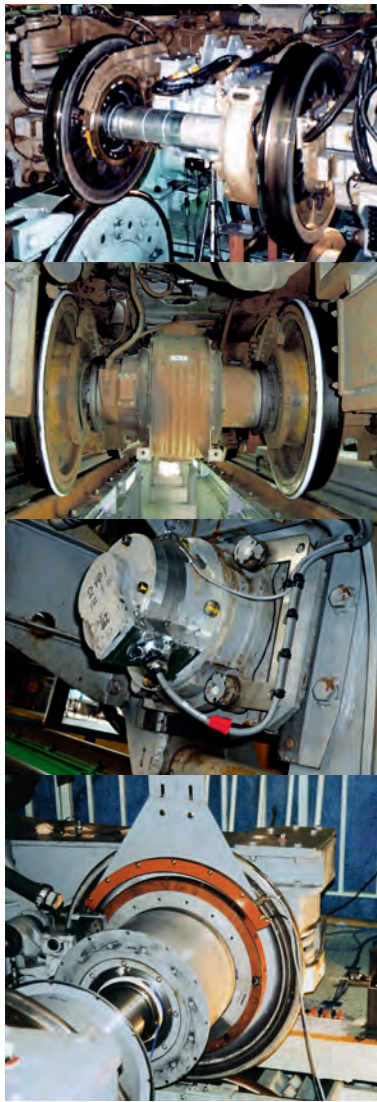


Wheelset Testing

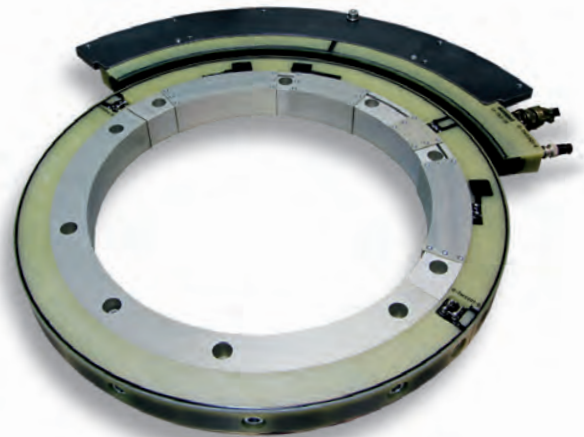
- Efficient acquisition of dynamic load data on railroad wheelsets
- Reliable measurement of forces, torque, vibration and temperature
- Multi-channel telemetry for wireless data transmission
- High accuracy and excellent signal quality
- Custom designed hardware for installation of the telemetry system on the wheelset
- Suitable for test rigs as well as for test track applications



Application examples of telemetry systems for railroad test rig and test track operation

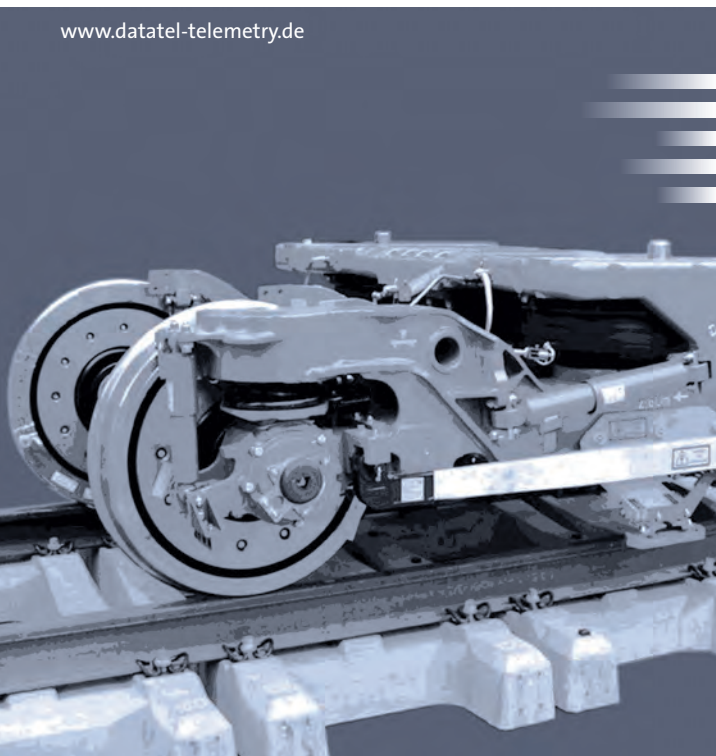


20ch. Telemetry system for centerline installation on wheelsets



Customized telemetry assembly with inductive coil/antenna system

www.datatel-telemetry.de



datatel
TELEMETRY